



Your trusted partner
**for the safe storage
and transport of
COVID-19 vaccines**

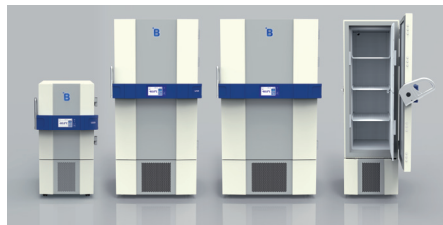


SAVING LIVES THROUGH RELIABLE AND INNOVATIVE TECHNOLOGY



B

B Medical Systems provides reliable cold chain solutions to preserve **the potency and integrity of COVID-19 vaccines.**



Ultra-low Freezers

 Up to 280.000 vaccine doses

-86°C -20°C



Ice Lined Refrigerators & Freezers

 Up to 50.000 vaccine doses

-20°C +8°C



Transport Boxes

 Up to 10.000 vaccine doses
(depending on dry ice/PCMs)

-80°C +8°C




Laboratory & Solar Direct Drive Refrigerators

 Up to 146.000 vaccine doses

+2°C +8°C

We have the solutions for any vaccine at any temperature to help you transport and store COVID-19 vaccines around the world.

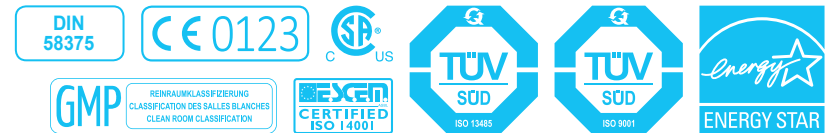


Ultra-low Freezers

from B Medical Systems offer a variable set point from -20°C to -86°C , ensuring the ability to store both Pfizer, Moderna and Sputnik vaccines.

- Temperature**
 -86°C to -20°C
- Net Volume**
206 & 720 L
- Cryoboxes capacity**
150 to 500

U201 & U701



- Certified Medical Devices according to MDR (EU) 2017/745, Class IIa and 21CFR Part 864.9700 (FDA), Class II
- Highly energy efficient
- Green Refrigerants
- Uniform temperature distribution
- 24*7 Remote Temperature Monitoring



COVID-19 Vaccine Storage

- ✓ Can be used for storing both Pfizer, Moderna and Sputnik vaccines
- ✓ Can be used in country hubs, regional hubs or last mile





Multi-mode Refrigerator / Freezer

from B Medical Systems can help you secure the broad temperature range of +8°C to -20°C.

Temperature
-20°C to +8°C

Vaccine capacity
150 L

Ice-packs capacity
187 (at 0.6 L)

TCW3000 AC

- Can act as vaccine refrigerator (Set-point at +5°C) or vaccine & ice-packs freezer (Set-point at -20°C)
- Hold over time at +43°C: 53 h 10 min. (Refrigerator)
3 h 55 min. (Freezer)
- Rotomolded body
- Designed for tropical temperatures: +15°C to +43°C
- 24*7 Remote Temperature Monitoring

COVID-19 Vaccine Storage

- ✓ Can be used for storing Moderna vaccines or any other vaccines requiring 2-8°C
- ✓ Can be used in country hubs, regional hubs or last mile



Transport Boxes

from B Medical Systems can be used for transporting all COVID-19 vaccines between country, regional hubs and the last mile.



Temperature*
-80°C to +8°C



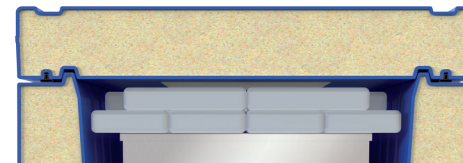
Vaccine capacity
1.04 & 20 L



Gross Volume
1.73 & 44 L

RCW1 & RCW25

- Rotomolded body
- Designed for Hot temperature zone: +15°C to +43°C



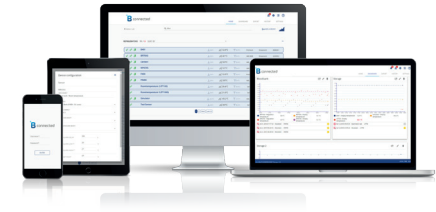
COVID-19 Vaccine Transportation

- ✓ Ideal for transportation between country hubs, regional hubs and last mile points of care
- ✓ Can be used for transportation of Pfizer vaccines, Moderna vaccines or any other vaccines requiring 2-8°C

* Using dry ice (RCW25).
Subject to change without prior notice. Some of the accessories shown in the pictures are optional.

Optimum control and protection

B Medical Systems | °B Connected & RTMD



°B CONNECTED MONITORING SOFTWARE

Universal software for the monitoring of refrigeration devices, including the acquisition, recording and visualization of temperature data.

- Unique monitoring software for the full range of Blood Management Solutions and Medical Refrigeration products
- Web-based interfaces for computers and mobile devices
- Modern design for simple and intuitive use
- Graphic display of temperature curves
- Integrated event and activity history of appliances' components
- Data recording on centralized database for long-term archiving
- Easy setting of specific alarm, via email or SMS alerts
- Generation of reports compiling crucial data and activities
- Temperature and detailed device data export for third-party software
- Important cost advantage compared to a traditional circular chart recorder and its spare parts
- REST API to access raw data directly from the database in read-only mode

KEY BENEFITS:

- Unique interface for the monitoring of the full range of refrigeration devices
- Centralized database providing data access to entire customer network

REMOTE TEMPERATURE MONITORING DEVICE (INTEGRATED)

*Integrated Remote Temperature Monitoring through our web based Vaclog network ensuring a high performing and reliable cold chain 24*7.*

- Real time monitoring of temperature(s), door openings & GPS position
- Crucial for the quality surveillance of the cold chain and monitoring of vaccines
- Rechargeable battery
- Worldwide remote monitoring & data access over WEB
- Only GSM network coverage is necessary to operate
- Google Maps positioning using integrated GPS module
- Alarms include temperature deviations and door openings
- Alarms are sent by text messages or emails





Technical Data Ultra Low Freezers



U201

U401

U501

U701

U901

| | | | | | | |
|--|-------------------------|-------------------|-------------------|-------------------|--------------------|-----------------|
| <i>Gross / Net volume (l)</i> | 214 / 206 | 451 / 434 | 598 / 577 | 747 / 720 | 895 / 863 | |
| <i>Storage capacity</i> | <i>Vials</i> | 15000 (2ml) | 30000 (2ml) | 40000 (2ml) | 50000 (2ml) | 60000 (2ml) |
| | <i>Cryoboxes</i> | 150 (model H50) | 345 (model H50) | 460 (model H50) | 575 (model H50) | 690 (model H50) |
| | <i>Plasma bags</i> | 150 (350ml) | 300 (350ml) | 400 (350ml) | 500 (350ml) | 600 (350ml) |
| <i>Set temperature (preset)</i> | -82°C | | | | | |
| <i>Set temperature (setting range)</i> <small>can be adjusted in steps of 0.1°C</small> | -86°C to -20°C | | | | | |
| <i>Preset cold / warm alarm limit</i> | -87°C / -77°C | | | | | |
| <i>Hold over time (-82°C to -60°C)</i> | 1 h 00 min. | 1 h 18 min. | 1 h 18 min. | 1 h 18 min. | 1 h 24 min. | |
| <i>Climate class (ambient temperature range)</i> | SN / T (+10°C to +43°C) | | | | | |
| <i>Defrosting technique</i> | Manual | | | | | |
| <i>Refrigerant type</i> | R290 / R170 | | | | | |
| <i>External dimensions H x W x D (mm)</i> | 1293 x 699 x 1039 | 1988 x 699 x 1039 | 1988 x 845 x 1039 | 1988 x 992 x 1039 | 1988 x 1139 x 1039 | |
| <i>Inner dimensions H x W x D (mm)</i> | 672 x 447 x 713 | 1370 x 447 x 713 | 1370 x 581 x 713 | 1370 x 740 x 713 | 1370 x 887 x 713 | |
| <i>Net weight with standard equipment (kg)</i> | 195 | 250 | 276 | 297 | 320 | |

| | | | | | | | | | | | |
|---------------------|---|------|------|------|------|------|------|------|------|------|------|
| Energy Saver | <i>Supply voltage (V)</i> | 230 | 220 | 230 | 220 | 230 | 220 | 230 | 220 | | |
| | <i>Frequency (Hz)</i> | 50 | 60 | 50 | 60 | 50 | 60 | 50 | 60 | | |
| | <i>Power (W)</i> | 2000 | 2000 | 2000 | 2000 | 2000 | 2000 | 2000 | 2000 | | |
| | <i>Energy consumption (kWh/24h)</i> | 12.0 | 12.0 | 11.0 | 12.5 | 11.3 | 12.5 | 11.9 | 13.5 | 12.4 | 15.5 |
| | <i>Heat emission (Kcal/h)</i> | 209 | 338 | 326 | 405 | 404 | 433 | 426 | 511 | 444 | 567 |
| | <i>Compressor running time (%)</i> | 45 | 45 | 46 | 44 | 51 | 47 | 50 | 55 | 59 | 61 |
| | <i>Noise level (dB(A))</i> <small>(at 1m height & 1m distance)</small> | 49 | 50 | 49 | 50 | 52 | 53 | 48 | 49 | 51 | 52 |



All values were measured at +25°C ambient temperature, -82°C Setpoint and without load.
Subject to change without prior notice. Some of the accessories shown in the pictures are optional.
The figures are approximate, and may vary based on the number of bags that are actually stored and the different bag manufacturers' specifications available on the market, the actual bag sizes as well as the individual user's practice of loading.



Technical Data Laboratory Refrigerators



L55



L130



L290



L380



LF260

Refrigerator & Freezer
combined

| | | | | | | |
|--|-----------------------|-----------------------|-----------------------|-----------------------|-----------------------|------------------------|
| <i>Gross / Net volume (l)</i> | 52 / 45 | 121 / 106 | 297 / 269 | 362 / 329 | R 121 / 106 | F 121 / 106 |
| <i>Set temperature (preset)</i> | +5°C | | | | | -32°C |
| <i>Set temperature (setting range) can be adjusted in steps of 0.1°C</i> | +4°C to +15°C | | | | | -32°C to -20°C |
| <i>Preset cold / warm alarm limit</i> | +3°C / +7°C | | | | | -37°C / -27°C |
| <i>Hold over time</i> | 1.3 h (+5°C to +10°C) | 1.5 h (+5°C to +10°C) | 1.0 h (+5°C to +10°C) | 0.9 h (+5°C to +10°C) | 1.5 h (+5°C to +10°C) | 0.7 h (-32°C to -23°C) |
| <i>Climate class (ambient temperature range)</i> | SN (+10°C to +32°C) | | | | | |
| <i>Defrosting technique</i> | Natural | | | | | Manual |
| <i>Refrigerant type</i> | R600a | | | | | R290 |
| <i>External dimensions H x W x D (mm)</i> | 670 x 495 x 575 | 830 x 595 x 695 | 1670 x 595 x 695 | 1980 x 595 x 695 | 1650 x 595 x 695 | |
| <i>Inner dimensions H x W x D (mm)</i> | 470 x 375 x 350 | 630 x 475 x 470 | 1470 x 475 x 470 | 1790 x 475 x 470 | 630 x 475 x 470 | 630 x 475 x 470 |
| <i>Net weight with standard equipment (kg)</i> | 38 | 59 | 94 | 107 | 117 | |

| | | | | | | | | | | | | | |
|---------------------|---|-----------|---------|-----------|---------|-----------|---------|-----------|---------|-----------|---------|-----------|---------|
| Energy Saver | <i>Supply voltage (V)</i> | 220-240 | 115-127 | 220-240 | 115-127 | 220-240 | 115-127 | 220-240 | 115-127 | 220-240 | 115-127 | 220-240 | 115-127 |
| | <i>Frequency (Hz)</i> | 50 / 60 | 60 | 50 / 60 | 60 | 50 / 60 | 60 | 50 / 60 | 60 | 50 / 60 | 60 | 50 / 60 | 60 |
| | <i>Power (W)</i> | 100 | 100 | 200 | 200 | 200 | 200 | 200 | 200 | 200 | 200 | 300 | 360 |
| | <i>Energy consumption (kWh/24h)</i> | 0.7 / 0.8 | 0.8 | 1.0 / 1.0 | 0.8 | 1.8 / 1.9 | 1.9 | 1.8 / 1.9 | 1.8 | 1.0 / 1.0 | 0.8 | 2.8 / 2.9 | 3.1 |
| | <i>Heat emission (Kcal/h)</i> | 25 | 29 | 36 | 29 | 64 | 68 | 64 | 64 | 36 | 20 | 100 | 111 |
| | <i>Compressor running time (%)</i> | 26 | 22 | 17 | 18 | 28 | 35 | 28 | 35 | 17 | 18 | 51 | 50 |
| | <i>Noise level (dB(A)) (at 1m height & 1m distance)</i> | 35 / 36 | 37 | 35 / 36 | 38 | 38 / 40 | 39 | 40 | 38 | 35 / 36 | 38 | 45 / 47 | 47 |



Technical Data Laboratory Refrigerators



L400

L500

L700

L900

| | | | | | | | | | |
|--|---|-------------------|-------------------|--------------------|---------|-------------|---------|-------------|---------|
| <i>Gross / Net volume (l)</i> | 451 / 384 | 598 / 510 | 747 / 636 | 895 / 763 | | | | | |
| <i>Set temperature (preset)</i> | +5°C | | | | | | | | |
| <i>Set temperature (setting range) can be adjusted in steps of 0.1°C</i> | +4°C to +15°C | | | | | | | | |
| <i>Preset cold / warm alarm limit</i> | +3°C / +7°C | | | | | | | | |
| <i>Hold over time</i> | 1.6 h (+5°C to +10°C) | | | | | | | | |
| <i>Climate class (ambient temperature range)</i> | SN / T (+10°C to +43°C) | | | | | | | | |
| <i>Defrosting technique</i> | Natural | | | | | | | | |
| <i>Refrigerant type</i> | R600a | | | | | | | | |
| <i>External dimensions H x W x D (mm)</i> | 1988 x 699 x 1039 | 1988 x 845 x 1039 | 1988 x 992 x 1039 | 1988 x 1139 x 1039 | | | | | |
| <i>Inner dimensions H x W x D (mm)</i> | 1167 x 447 x 713 | 1167 x 590 x 713 | 1167 x 740 x 713 | 1167 x 887 x 713 | | | | | |
| <i>Net weight with standard equipment (kg)</i> | 194 | 215 | 237 | 259 | | | | | |
| Energy Saver | <i>Supply voltage (V)</i> | 220-240 | 115-127 | 220-240 | 115-127 | 220-240 | 115-127 | 220-240 | 115-127 |
| | <i>Frequency (Hz)</i> | 50 / 60 | 60 | 50 / 60 | 60 | 50 / 60 | 60 | 50 / 60 | 60 |
| | <i>Power (W)</i> | 300 | 300 | 300 | 300 | 300 | 300 | 300 | 300 |
| | <i>Energy consumption (kWh/24h)</i> | 1.40 / 1.40 | 1.30 | 1.40 / 1.40 | 1.30 | 1.40 / 1.50 | 1.30 | 1.50 / 1.50 | 1.30 |
| | <i>Heat emission (Kcal/h)</i> | 29 | 27 | 33 | 28 | 32 | 30 | 35 | 29 |
| | <i>Compressor running time (%)</i> | 22 | 22 | 25 | 23 | 24 | 25 | 25 | 24 |
| | <i>Noise level (dB(A)) (at 1m height & 1m distance)</i> | 46 / 49 | 52 | 47 / 51 | 50 | 50 / 51 | 46 | 47 / 47 | 46 |



All values were measured at +25°C ambient temperature and without load.
Subject to change without prior notice. Some of the accessories shown in the pictures are optional.

SAVING LIVES THROUGH RELIABLE AND INNOVATIVE TECHNOLOGY



Technical Data Solar Direct Drive



Ultra 16 SDD

TCW 15 SDD

TCW 15R SDD

TCW 40 SDD

TCW 40R SDD

TFW 40 SDD

| Function | Vaccine Refrigerator | Vaccine Refrigerator & Ice-pack Freezer | Vaccine Refrigerator | Vaccine Refrigerator & Ice-pack Freezer | Vaccine Refrigerator | Ice-pack Freezer | |
|--------------------------------------|----------------------|---|----------------------|---|----------------------|--------------------------------|-------------------|
| Climate zone | Hot zone (+43°C) | | | | | | |
| Vaccine storage capacity (l) | 16 | 16 | 16 | 36 | 36 | - | |
| Ice-pack storage capacity (at 0.6 L) | - | 4 (in ice-packs holders) | - | 8 (in ice-packs holders) | - | 60 + 8 (in ice-packs holders)* | |
| Ice-pack freezing capacity | - | 1.97 kg / 24 h | - | 1.89 kg / 24 h | - | 2.16 kg / 24 h | |
| Autonomy time (+2°C to +8°C) | 477 h 56 | 84 h | 81 h 52 | 81 h 54 | 81 h 54 | 120 h | |
| Hold over time (+2°C to +10°C) | - | - | 87 h 48 | 93 h 24 | 93 h 24 | - | |
| Cool down time | 312 h | 35 h | 36 h | 36 h | 36 h | 313 h | |
| Dimensions H x W x D (mm) | External | 1130 x 850 x 780 | 950 x 730 x 730 | 950 x 730 x 730 | 900 x 1030 x 780 | 900 x 1030 x 780 | 900 x 1030 x 780 |
| | Shipping | 1260 x 940 x 878 | 1088 x 770 x 778 | 1088 x 770 x 778 | 1060 x 1040 x 800 | 1060 x 1040 x 800 | 1060 x 1040 x 800 |
| Shipping weight (kg) | 203 | 87 | 85 | 120 | 120 | 119 | |
| Number & type of solar panels | 2 x 200 W / 25 V | 2 x 200 W / 25 V | 2 x 200 W / 25 V | 2 x 200 W / 25 V | 2 x 200 W / 25 V | 2 x 200 W / 25 V | |
| Energy consumption / 24 h | Stable running | 0.34 KWh | 0.49 KWh | 0.43 KWh | 0.57 KWh | 0.80 KWh | 0.59 KWh |
| | Cool down | 0.38 KWh | 0.50 KWh | 0.43 KWh | 0.67 KWh | 0.67 KWh | 0.59 KWh |
| | During freezing | - | 0.69 KWh | - | 0.69 KWh | - | 0.64 KWh |
| PQS code | E003 / 090 | E003 / 077 | E003 / 067 | E003 / 042 | E003 / 068 | E003 / 073 | |
| CCEOP-eligible | Yes | Yes | Yes | Yes | Yes | Yes | |
| Freeze protection | Grade A | Grade A | Grade A | Grade A | Grade A | - | |

* Maximum ice-pack storage capacity.
All values were measured at +32°C or +43°C according to the climate zone of the concerned model (unless otherwise specified).
Subject to change without prior notice. Some of the accessories shown in the pictures are optional.



Technical Data

Solar Direct Drive



TCW 2000 SDD TCW 2043 SDD TCW 3000 SDD TCW 3043 SDD TCW 4000 SDD

| | | | | | | |
|--|---|---|------------------------|----------------------|----------------------|-------------------|
| <i>Function</i> | Vaccine Refrigerator & Ice-pack Freezer | Vaccine Refrigerator & Ice-pack Freezer | Vaccine Refrigerator | Vaccine Refrigerator | Vaccine Refrigerator | |
| <i>Climate zone</i> | Temperate zone (+32°C) | Hot zone (+43°C) | Temperate zone (+32°C) | Hot zone (+43°C) | Hot zone (+43°C) | |
| <i>Vaccine storage capacity (l)</i> | 99 | 70 | 156 | 89 | 220 | |
| <i>Ice-pack storage capacity (at 0.6 L)</i> | 24 | 17 | - | - | - | |
| <i>Ice-pack freezing capacity</i> | 4.8 kg / 24 h | 2.5 kg / 24 h | - | - | - | |
| <i>Autonomy time (+2°C to +8°C)</i> | 85 h 24 | 73 h 54 | 86 h 56 | 116 h 41 | 91 h 16 | |
| <i>Hold over time (+2°C to +10°C)</i> | 92 h | 79 h | 94 h 05 | 124 h 48 | - | |
| <i>Cool down time</i> | 12 h | 56 h | 36 h | 145 h | 312 h | |
| <i>Dimensions</i> <i>H x W x D</i> <i>(mm)</i> | <i>External</i> | 910 x 1270 x 780 | 910 x 1270 x 780 | 910 x 1270 x 780 | 910 x 1270 x 780 | 915 x 1625 x 780 |
| | <i>Shipping</i> | 1030 x 1300 x 800 | 1030 x 1300 x 800 | 1030 x 1300 x 800 | 1030 x 1300 x 800 | 1040 x 1660 x 805 |
| <i>Shipping weight (kg)</i> | 149 | 160 | 143 | 169 | 192 | |
| <i>Number & type of solar panels</i> | 4 x 200 W / 25 V | 4 x 200 W / 25 V | 2 x 200 W / 25 V | 2 x 200 W / 25 V | 2 x 200 W / 25 V | |
| <i>Energy consumption / 24 h</i> | <i>Stable running</i> | 0.78 kWh | 0.73 kWh | 0.25 kWh | 0.68 kWh | 0.83 kWh |
| | <i>Cool down</i> | 0.74 kWh | 0.79 kWh | 0.34 kWh | 0.68 kWh | 0.84 kWh |
| | <i>During freezing</i> | 0.96 kWh | 1.05 kWh | - | - | - |
| <i>PQS code</i> | E003 / 035 | E003 / 043 | E003 / 030 | E003 / 045 | E003 / 093 | |
| <i>CCEOP-eligible</i> | - | Yes | - | Yes | Yes | |
| <i>Freeze protection</i> | Grade A | Grade A | Grade A | Grade A | Grade A | |

* Maximum ice-pack storage capacity.
All values were measured at +32°C or +43°C according to the climate zone of the concerned model (unless otherwise specified).
Subject to change without prior notice. Some of the accessories shown in the pictures are optional.

SAVING LIVES THROUGH RELIABLE AND INNOVATIVE TECHNOLOGY



Technical Data Iceliners



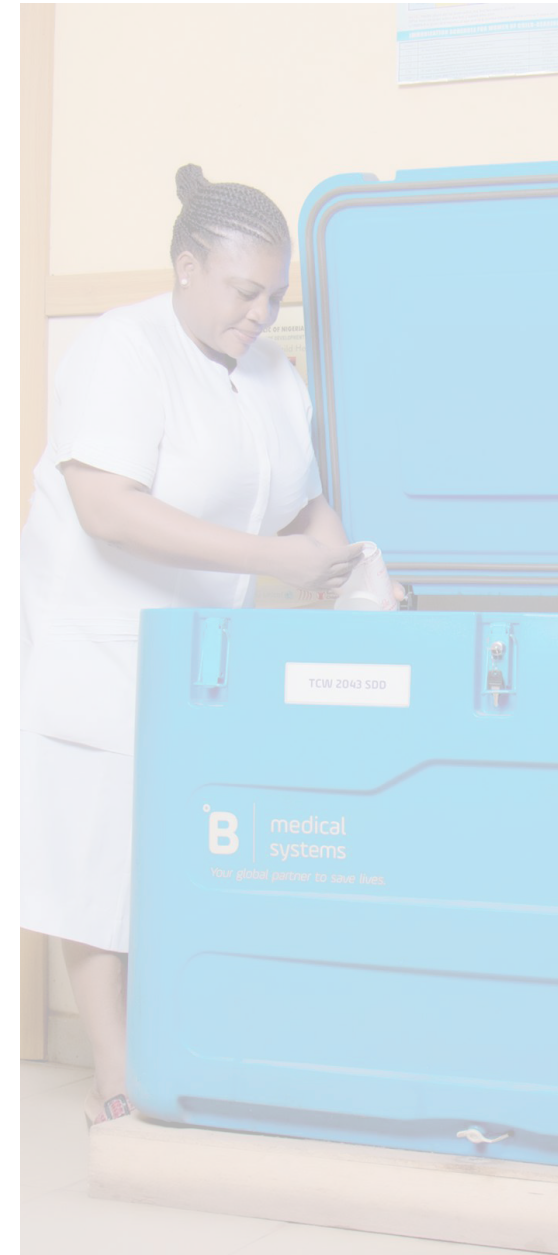
TCW 40R AC

TCW 80 AC

TCW 2000 AC

TCW 2000 DC

| <i>Function</i> | | Vaccine Refrigerator | Vaccine Refrigerator | Vaccine Refrigerator & Ice-pack Freezer | Vaccine Refrigerator & Ice-pack Freezer |
|---|------------------------|---------------------------|---------------------------|---|---|
| <i>Climate zone</i> | | Hot zone (+43°C) | | | |
| <i>Vaccine storage capacity (l)</i> | | 36.5 | 80.5 | 60 | 76 |
| <i>Ice-pack storage capacity (at 0.6 L)</i> | | - | - | 20 | 24 |
| <i>Ice-pack freezing capacity</i> | | - | - | 10 kg / 24 h | 3.4 kg / 24 h |
| <i>Hold over time (+2°C to +10°C)</i> | | 121 h 54 | 72 h 09 | 39 h 24 | 13 h 35 |
| <i>Dimensions H x W x D (mm)</i> | <i>External</i> | 888 x 1022 x 778 | 888 x 1022 x 778 | 910 x 1270 x 780 | 910 x 1270 x 780 |
| | <i>Shipping</i> | 1040 x 1060 x 800 | 1040 x 1060 x 800 | 1030 x 1300 x 800 | 1030 x 1300 x 800 |
| <i>Shipping weight (kg)</i> | | 128 | 113 | 128 | 120 |
| <i>Operating voltage range</i> | | AC I 110-240 V - 50/60 Hz | AC I 110-240 V - 50/60 Hz | AC I 230 V - 50 Hz 110 V - 60 Hz | DC I 12 or 24 V |
| <i>Energy consumption / 24 h</i> | <i>Stable running</i> | 0.80 KWh | 1.16 KWh | 1.87 KWh | 0.58 KWh |
| | <i>Cool down</i> | 0.76 KWh | 0.60 KWh | 4.34 KWh | 1.23 KWh |
| | <i>During freezing</i> | - | - | 1.95 KWh | 0.99 KWh |
| <i>PQS code</i> | | E003 / 100 | E003 / 101 | E003 / 014 | E003 / 001 |
| <i>CCEOP-eligible</i> | | Yes | Yes | Yes | - |
| <i>Freeze protection</i> | | Grade A | Grade A | Grade A | Grade A |





Technical Data Iceliners



TCW 3000 AC

TCW 3000 DC

TFW 3000 AC

TCW 4000 AC

| Function | | Vaccine Refrigerator or Ice-pack Freezer | Vaccine Refrigerator or Ice-pack Freezer | Ice-pack Freezer | Vaccine Refrigerator |
|--------------------------------------|-----------------|---|---|--|--|
| Climate zone | | Hot zone (+43°C) | | | |
| Vaccine storage capacity (l) | | 150 | 109.5 | - | 240 |
| Ice-pack storage capacity (at 0.6 L) | | 187 | 80 | 162 | - |
| Ice-pack freezing capacity | | - | 17 kg / 24 h | 32.4 kg / 24 h | - |
| Hold over time (+2°C to +10°C) | | 53 h 10 | 23 h 24 | - | 77 h 18 |
| Dimensions H x W x D (mm) | External | 910 x 1270 x 780 | 910 x 1270 x 780 | 910 x 1270 x 780 | 915 x 1625 x 780 |
| | Shipping | 1030 x 1300 x 800 | 1030 x 1300 x 800 | 1030 x 1300 x 800 | 1040 x 1660 x 805 |
| Shipping weight (kg) | | 123 | 115 | 126 | 192 |
| Operating voltage range | | AC 230 V - 50 Hz 110 V - 60 Hz | DC 12 or 24 V | AC 220-240 V - 50/60 Hz 115 V - 60 Hz | AC 220-240 V - 50/60 Hz 115 V - 60 Hz |
| Energy consumption / 24 h | Stable running | 3.83 KWh at +43°C | 1.01 / 1.82* KWh | 2.15 KWh | 0.85 KWh |
| | Cool down | 3.91 KWh at +43°C | 2.15 / 2.13* KWh | 2.20 KWh | 1.24 KWh |
| | During freezing | - | - / 2.35* KWh | 2.20 KWh | - |
| PQS code | | E003 / 017 | E003 / 008 | E003 / 071 | E003 / 066 |
| CCEOP-eligible | | - | - | Yes | Yes |
| Freeze protection | | Grade A | Grade A | - | Grade A |

* Freezer mode



Technical Data Transport Boxes



RCW 1



RCW 2



RCW 4



RCW 8



RCW 12



RCW 25

| | | RCW 1 | RCW 2 | RCW 4 | RCW 8 | RCW 12 | RCW 25 |
|--|------------------------------|------------------|----------------------|------------------------|-------------------------|-----------------|-----------------|
| <i>Cooling system</i> | | Passive | | | | | |
| <i>Climate zone</i> | | Hot zone (+43°C) | | | | | |
| <i>Gross volume (l)</i> | | 1.73 | 2.2 | 8 | 20 | 24 | 44 |
| <i>Vaccine storage capacity (l)</i> | | 1.04 | 0.6 | 3 | 6 | 7 | 20 |
| <i>Required Ice-pack (for vaccine)</i> | | 3 x 0.6 L | 2 x 0.3 L | 1 x 0.6 L 6 x 0.3 L | 10 x 0.6 L 2 x 0.3 L | 14 x 0.6 L | 24 x 0.6 L |
| <i>Cold life (up to +10°C) at +43°C</i> | | 32 h 06 | 17 h (22 h at +32°C) | 30 h 18 | 57 h 54 | 114 h 54 | 134 h 36 |
| <i>Cool life (up to +20°C) at +43°C</i> | | - | - | 6 h 42 | 12 h | 26 h 24 | 34 h 24 |
| <i>Warm life (down to 0°C) at -20°C</i> | | 17 h 06 | - | 12 h 54 | 21 h 36 | 40 h 54 | 49 h 30 |
| <i>Dimensions H x W x D (mm)</i> | <i>External</i> | 430 x 347 x 281 | 210 x 250 x 150 | 299 x 362 x 283 | 437 x 588 x 288 | 499 x 550 x 475 | 499 x 710 x 550 |
| | <i>Inner</i> | 208 x 103 (∅) | 130 x 190 x 90 | 186 x 260 x 156 | 245 x 460 x 180 | 270 x 340 x 260 | 264 x 496 x 334 |
| | <i>Shipping</i> | 460 x 356 x 295 | 230 x 285 x 160 | 320 x 380 x 300 | 470 x 610 x 310 | 530 x 570 x 490 | 530 x 730 x 570 |
| <i>Weight (kg)</i> | <i>Net - empty</i> | 4.8 | 1.2 | 3.1 | 6.8 | 11.7 | 15.9 |
| | <i>Gross - fully stocked</i> | 7.6 | 2.1 | 7.3 | 16.4 | 23.3 | 38.9 |
| | <i>Shipping</i> | 7 | 2 | 4.2 | 11 | 17 | 23 |
| <i>Insulation thickness (polyurethane)</i> | | 51-116 mm | 30 mm | 23-27 mm | 50-60 mm | 90-105 mm | 90-105 mm |
| <i>PQS code</i> | | E004 / 059 | - | E004 / 002 | E004 / 003 | E004 / 004 | E004 / 005 |



B Medical Systems provides reliable cold chain solutions.
Upgrade your cold chain today and protect your population.



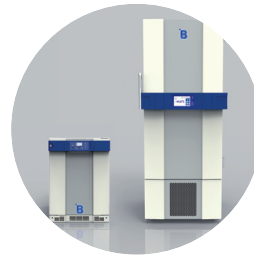
Vaccine
Cold Chain
Solar Direct Drive



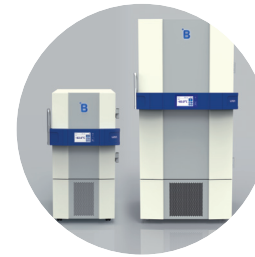
Pharmacy
Refrigerators



Laboratory
Refrigerators



Laboratory
Freezers



Ultra-low
Freezers



Transport Boxes



**Cold storage solutions are certified medical devices according to
MDR and FDA regulations*. WHO PQS certified**.**

*Applicable to all products except Vaccine Cold Chain and Transport Boxes. **Applicable only to most of the Cold Chain products.



Blood Management Solutions

Safe global blood management: from collection to transfusion, transportation, processing and storage



Vaccine Cold Chain

Reliable solutions for safe vaccination around the world



Medical Refrigeration

State-of-the-art technology for the exacting needs of the medical world



After Sales support and service

We strive to provide you with the highest standards of service; not only through our selected distributors and partners for all your maintenance and service but also our second line trouble shooting and after sales service. This factory-based group of engineers is there to help our partners and yourself to get the best solution for your cold storage needs.

Our Global Expertise



SAVING LIVES THROUGH RELIABLE AND INNOVATIVE TECHNOLOGY

B Medical Systems (formerly Dometic Medical Systems) has more than 40 years' experience in the medical refrigeration sector.

The company, formerly known as Electrolux Medical Systems, was founded in 1979 when the World Health Organization approached Electrolux in Vianden, Luxembourg, to create a solution for the safe storage and transport of vaccines around the world. In 2001, Electrolux Medical Systems became part of the Dometic Group, and was renamed Dometic Medical Systems. Having established a legitimate reputation in the medical equipment industry, the company has also become a global leader in vaccine cold chain.

Luxembourg, in the heart of Europe



B Medical Systems S.à r.l.

17, op der Hei
L - 9809 Hosingen, Luxembourg

Tel.: (+352) 92 07 31-1
Fax: (+352) 92 07 31-300
info@bmedicalsistemas.com



www.bmedicalsistemas.com

WE SUPPORT



Since 2019 B Medical Systems has been committed to the UN Global Compact corporate responsibility initiative and its principles in the areas of human rights, labour, the environment and anti-corruption.